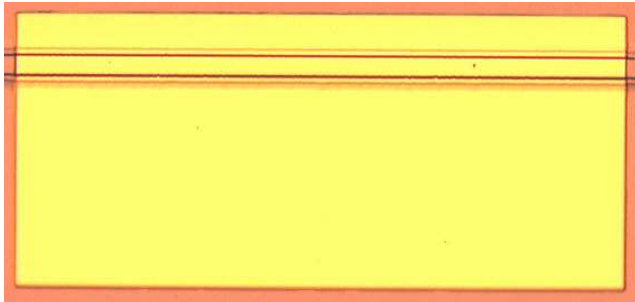




2.5 to 10 Gb/s Reflective SOA



Applications

- WDM-PON (external or self-seeding)
- External cavity laser

Features

- Large reflection gain
- Single polarization
- Operation up to 10 Gb/s
- C-band or O-band

Specifications at 25°C and I = 100 mA

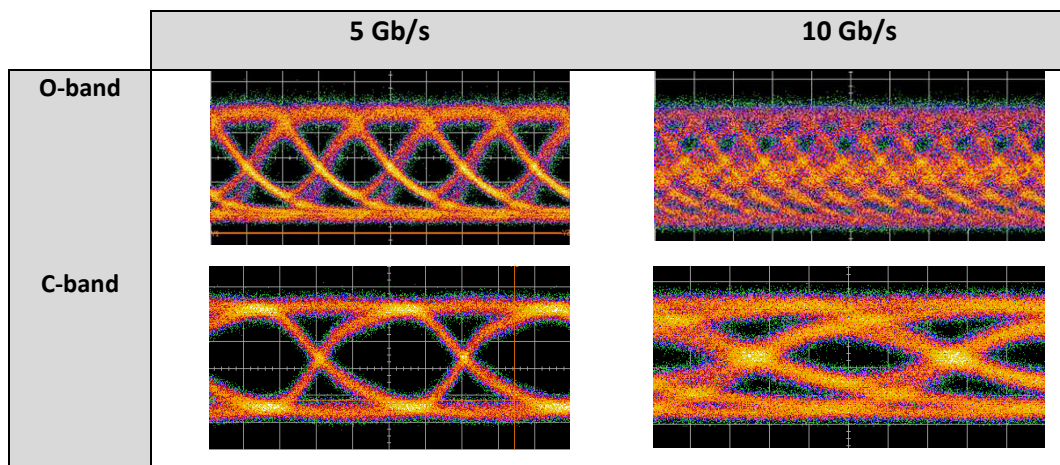
Parameters	Min	Typ.	Max	Unit
Reflection gain at gain peak	25	30		dB
Gain peak		1320 or 1540		nm
3-dB bandwidth	1.5	2 or 4		GHz
Output saturation power	5	10		dBm
Gain ripple		5	10	dB
Polarization dependence	13	20		dB
Far-field divergence (FWHM)		13*17	20*25	°*°

Absolute maximum ratings

Parameters	Min	Typ.	Max	Unit
RSOA maximum reverse bias			- 5	V
RSOA maximum current			200	mA
Operational temperature	0	25	70	°C
Maximum input power			+ 10	dBm

Figures are not contractual. III-V Lab reserves the right to make changes to the products or information contained herein without notice.

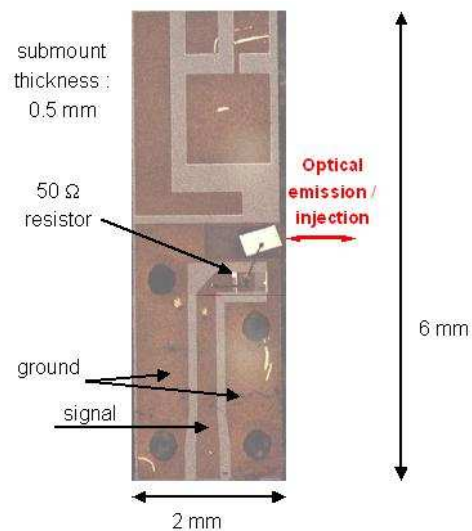
Typical performances



Eye-diagrams at 5 and 10 Gb/s (ASE modulation)

Outline drawing and pads allocation

Carrier thickness: 0.5 mm



Figures are not contractual. III-V Lab reserves the right to make changes to the products or information contained herein without notice.